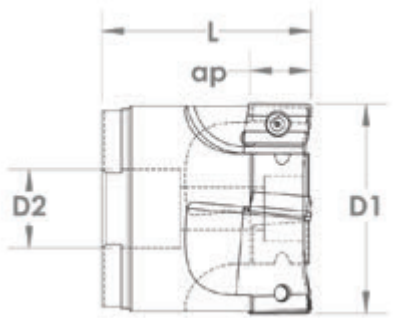


SSFM SERIES—SQUARE SHOULDER FACE MILL

- APET AND XPET inserts feature high positive geometry for aggressive material removal rates with lower horsepower consumption and strong edge prep for heavy chip loads
- **Applications:** Facing, milling, slotting, helical interpolation, roughing, pocketing, profiling



Shell Mill Mount

Part #	EDP#	(D)	(ap)	# of Flutes	(D2)	(L)	Insert
SSFM1500-0750SM-5503	V12011	1.500"	.55"	3	.750"	2.00	APET or XPET 1604...
SSFM2000-0750SM-5504	V12012	2.000"	.55"	4	.750"	2.00	APET or XPET 1604...
SSFM2500-0750SM-5505	V12013	2.500"	.55"	5	.750"	2.00	APET or XPET 1604...
SSFM3000-1000SM-5505	V12014	3.000"	.55"	5	1.000"	2.25	APET or XPET 1604...
SSFM4000-1000SM-5506	V12015	4.000"	.55"	6	1.000"	2.25	APET or XPET 1604...
SSFM5000-1500SM-5507	V12016	5.000"	.55"	7	1.500"	2.50	APET or XPET 1604...
SSFM6000-1500SM-5508	V12017	6.000"	.55"	8	1.500"	2.50	APET or XPET 1604...
SSFM8000-1500SM-5508	V12018	8.000"	.55"	8	1.500"	2.50	APET or XPET 1604...

R8 Shank

Part #	EDP#	(D)	(ap)	# of Flutes	(S)	(H)	Insert
SSFM2000-R8-5504	V12069	2.000"	.55"	4	R8	2.00"	APET or XPET 1604...
SSFM3000-R8-5505	V12070	3.000"	.55"	5	R8	2.00"	APET or XPET 1604...

Note: For tool R8 Shank tool description see bottom of page 4

Hardware for Square Shoulder End Mills or Face Mills

INSERT	SCREW
APET or XPET 1003...	F663
APET or XPET 1604...	F899